

This pamphlet contains statistical information for Shorewood Public Library. All statistics are for the year 2015. The library cooperates with the Wisconsin Department of Public Instruction (DPI) and, in turn, the Institute of Museum and Library Services (IMLS), which develops and compiles national public library statistics for the United States. Shorewood Public Library provides this information so that policymakers, funders, trustees, and librarians can identify trends in the country's library services.

Performance indicators are included for their potential application to library services planning and usefulness as general indicators of library service. Further information on survey methodology and the application of these statistics may be found through DPI's website at pld.dpi.wi.gov/pld_dm-lib-stat.

Collection – Total Holdings	272,826
Books in Print	74,269
Downloadable E-Books	139,728
Audio Materials	10,225
Downloadable Audio	35,380
Video Materials	9,438
Downloadable Video	1,059
Serial Subscriptions (Including Periodicals and Newspapers)	203
Databases (Total)	52
Shorewood Public Library	4
Milwaukee County Federated Library System	0
Wisconsin	48
Other Material	2,472

**What can you find at
Shorewood Public Library?
(2015)**

- 74,269 Books (5,832 added in 2015)
- 9,438 Videos (823 added in 2015)
- 10,225 Audios (768 added in 2015)
- 24 Public Internet Computers
- 52 Databases
- 139,728 E-Books
- 203 Magazines and Newspapers
- 257 Children's Programs
- 80 Children's Drop-in Activities
- 65 Young Adult Programs
- 17 Young Adult Drop-in Activities
- 48 Other Programs
- 34 Other Drop-in Activities
- 21,000 Square Feet



Shorewood Public Library
3920 N. Murray Ave.
Shorewood, WI 53211

(414)847-2670

www.shorewoodlibrary.org

ANNUAL REPORT OF LIBRARY STATISTICS



Shorewood
Public Library

Shorewood Public Library • 2015 Statistics

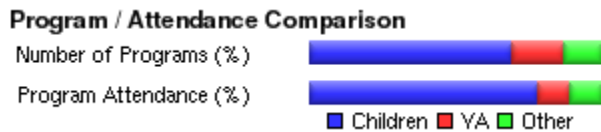
General	
Branches	0
Bookmobiles	0
Registered Borrowers	11,649
Resident	11,645
Nonresident	4
Population	13,178
Extended County Population	13,188
Square Footage	21,000

Circulation – Total	327,489
Children's	135,903
Other	191,586

Other Transactions – 2015	
Library Visits (Actual Count)	198,214
Reference (Actual Count)	14,005

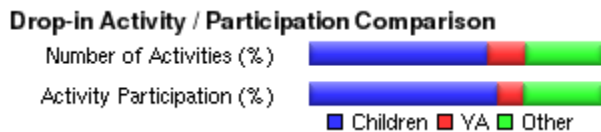
Programs – Total	370
Children's	257
Young Adult	65
Other	48

Program Attendance – Total	11,191
Children's	8,742
Young Adult	1,210
Other	1,239



Drop-in Activities – Total	131
Children's	80
Young Adult	17
Other	34

Drop-in Activity Participation – Total	1,762
Children's	1,136
Young Adult	161
Other	465



Downloadable Content	
Books	139,728
Audio	35,380
Video	1,059

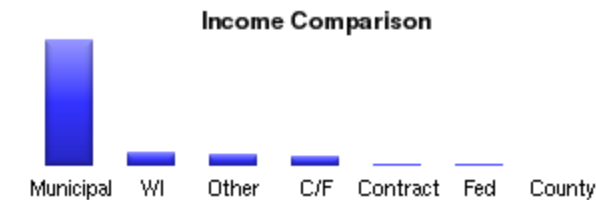
Service Hours	
2015 (Main, Branches, & Bookmobiles)	3,097
Winter 37 weeks, 61 hours per week	
Summer 15 weeks, 56 hours per week	

Internet Access – 2015	
Internet Computer Uses	38,660
Public Access Internet Computers	24
Wireless Internet Access Uses	13,839

Interlibrary Loans	
Borrowed (Received)	59,984
Loaned (Provided)	36,852

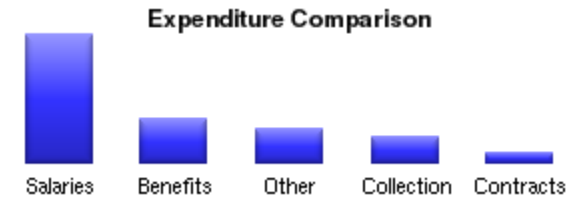
Staff – Total	13.00
FTE Librarians	5.75
With an MLS Degree	5.75
Other Librarians	0.00
Other Staff	7.25

Income – Total	\$1,013,563
Municipal	\$812,514
County	\$0
Other County Payments	\$0
State	\$78,271
Federal	\$200
Contract	\$228
Funds Carried Forward	\$54,989
Other	\$67,361



Capital Revenue – Total	
Municipal	
County	
State	
Federal	
Other	

Expenditures – Total	\$956,072
Salaries	\$508,436
Benefits	\$172,736
Collection – Total	\$103,931
Print Materials	\$75,062
Electronic Materials	\$8,064
Audiovisual Materials	\$20,805
Other Materials	\$0
Contracts (Services from Other Libraries)	\$39,627
Other Operating Expenditures	\$131,342



Annual Performance Indicators (2015)	
Circulation Per Capita	24.832
Collection Holdings Per Capita	20.687
Collection Turnover Rate	1.20
Expenditures Per Capita	\$72.50
Income Per Capita	\$76.85
Visits Per Capita	15.03